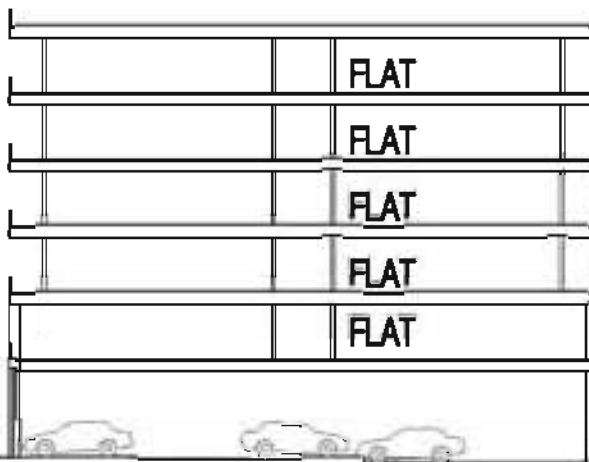


PROJECT DATA:

179 UNITS	= 158,900 SF
RETAIL	= 20,560 SF
PARKING REQUIRED = 299	
SURFACE = 380	
*PARKING PROVIDED = 380	
*ADDITIONAL PARKING - 4.5 MIN. WALKING @ 4.2 FT. PER. SECOND	

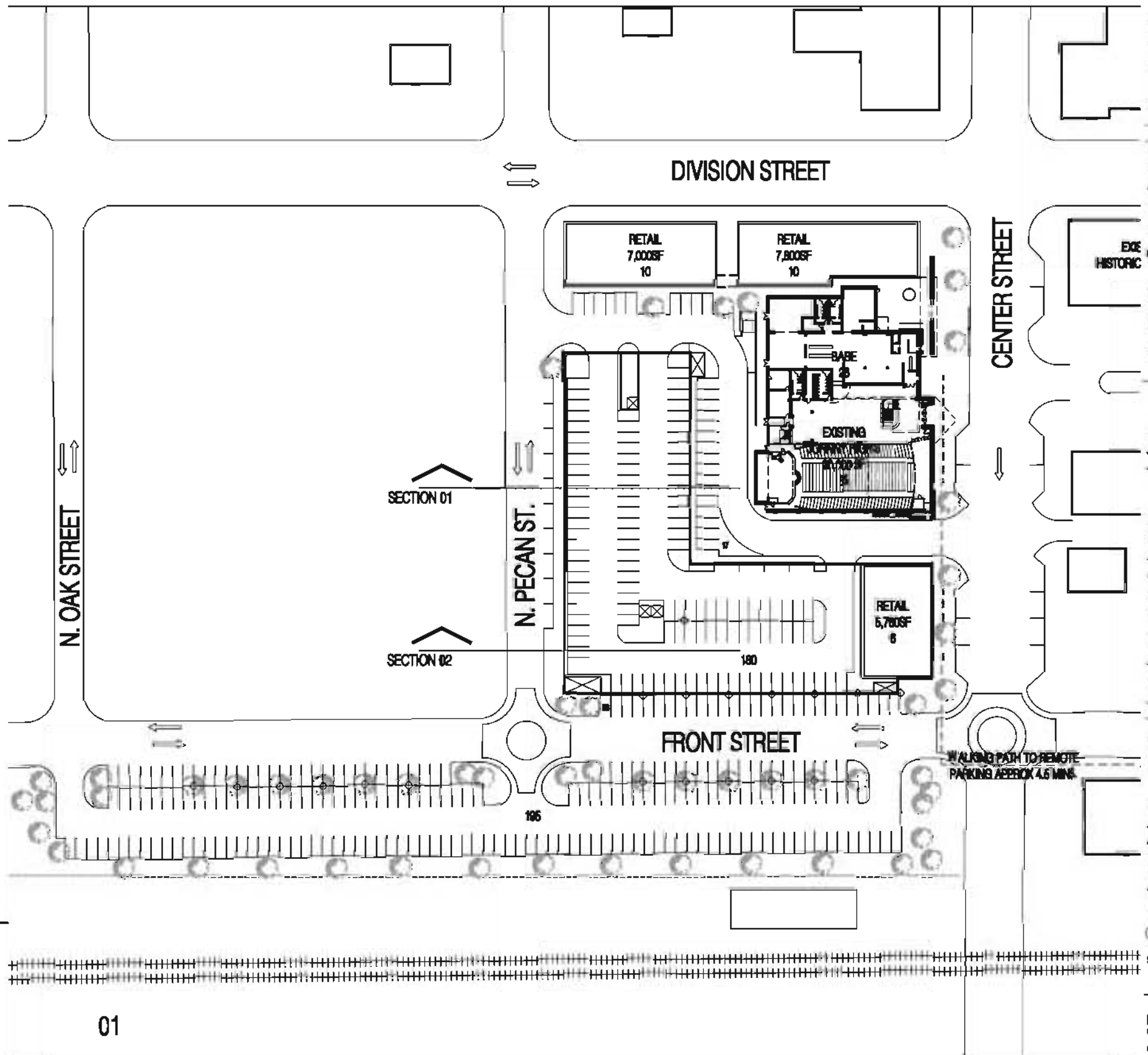
BABE:
 EXISTING = 5,000 SF
 ADDITION = 3,500 SF
 TOTAL = 8,500 SF
 256 SEATS

JOHNNIE HIGHS:
 LEVEL 01 = 8,800 SF
 LEVEL 02 = 4,800 SF
 TOTAL = 13,400 SF



section 01

JOHNNIE HIGHS



Johnnie High's Revue

Arlington, TX

site plan - ground level

0

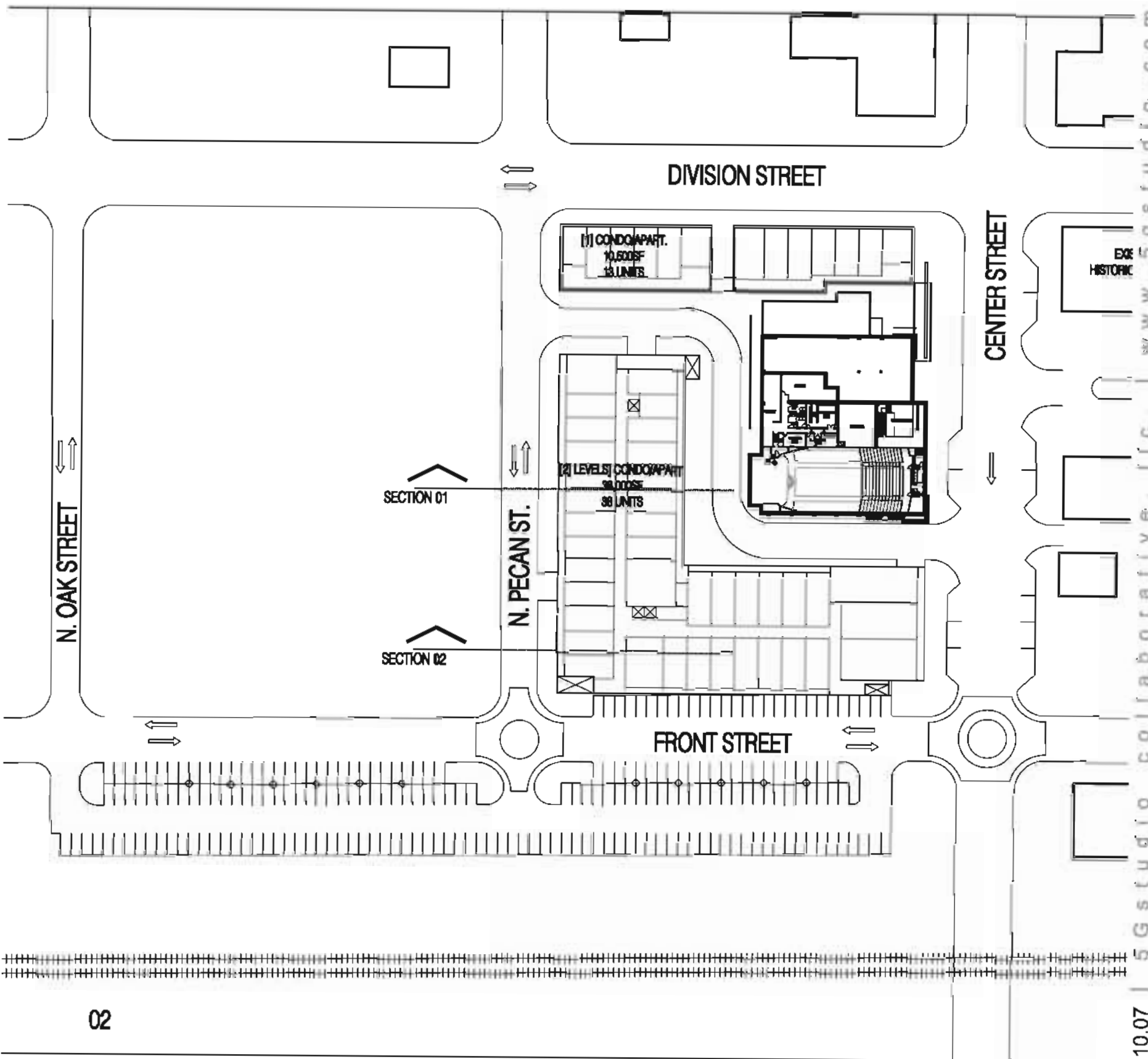
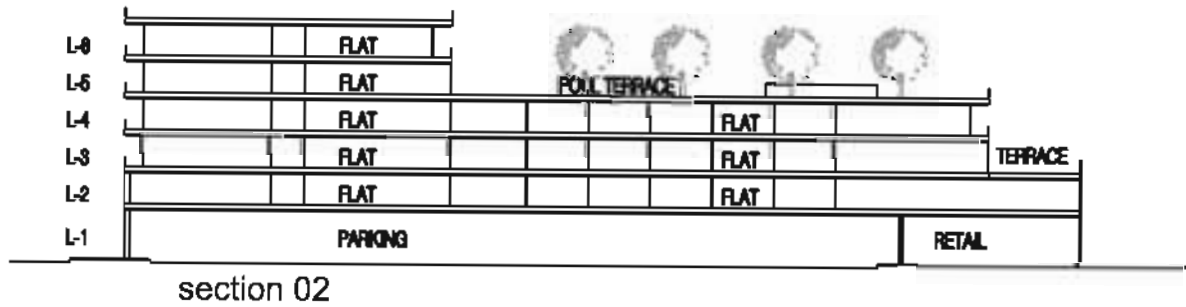
100f



05

05.10.07

5 Gstudio_collaborative, llc. | www.5gstudio.com



Johnnie High's Revue

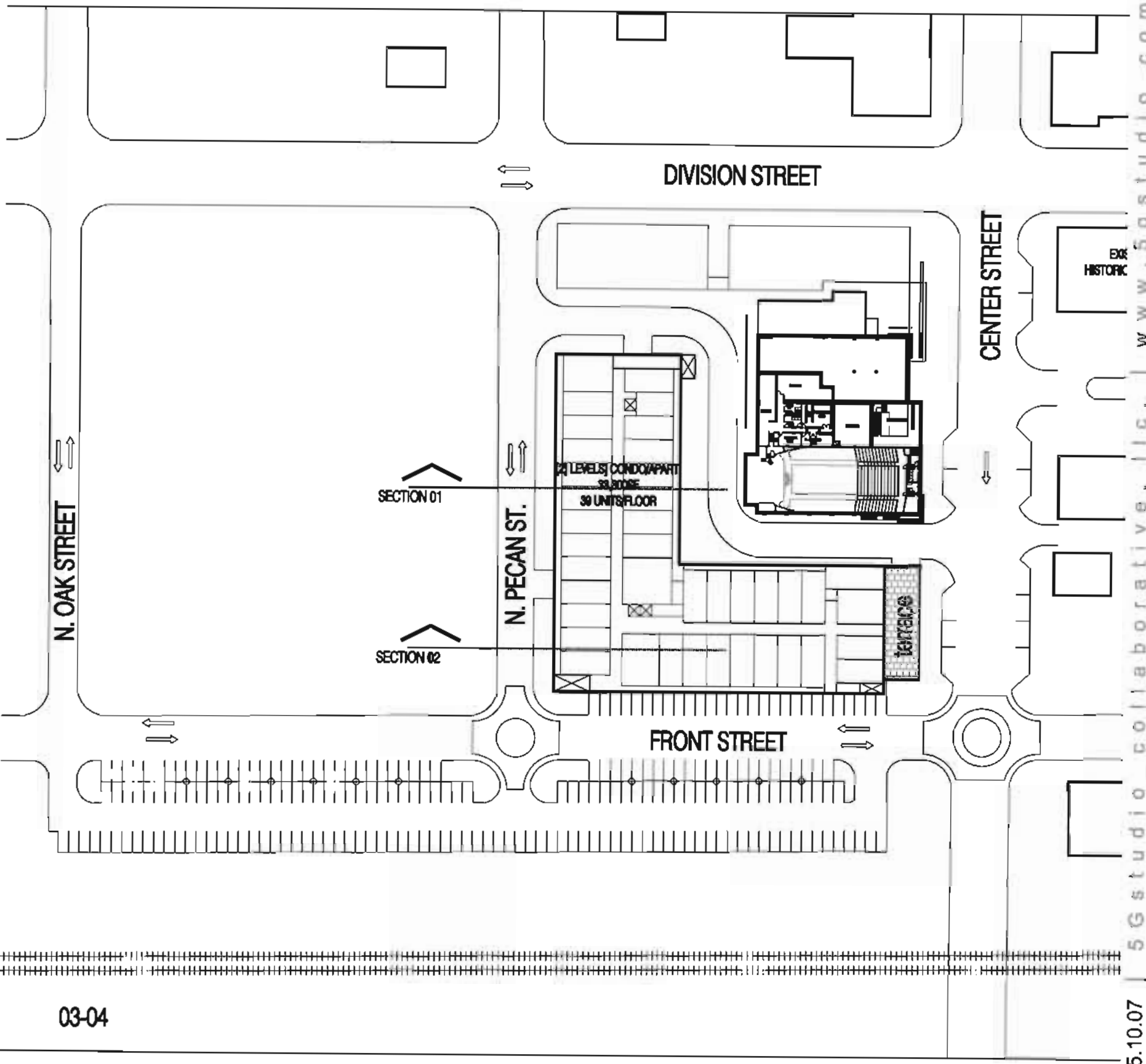
Arlington, TX

level 02

0

100f





03-04

Johnnie High's Revue

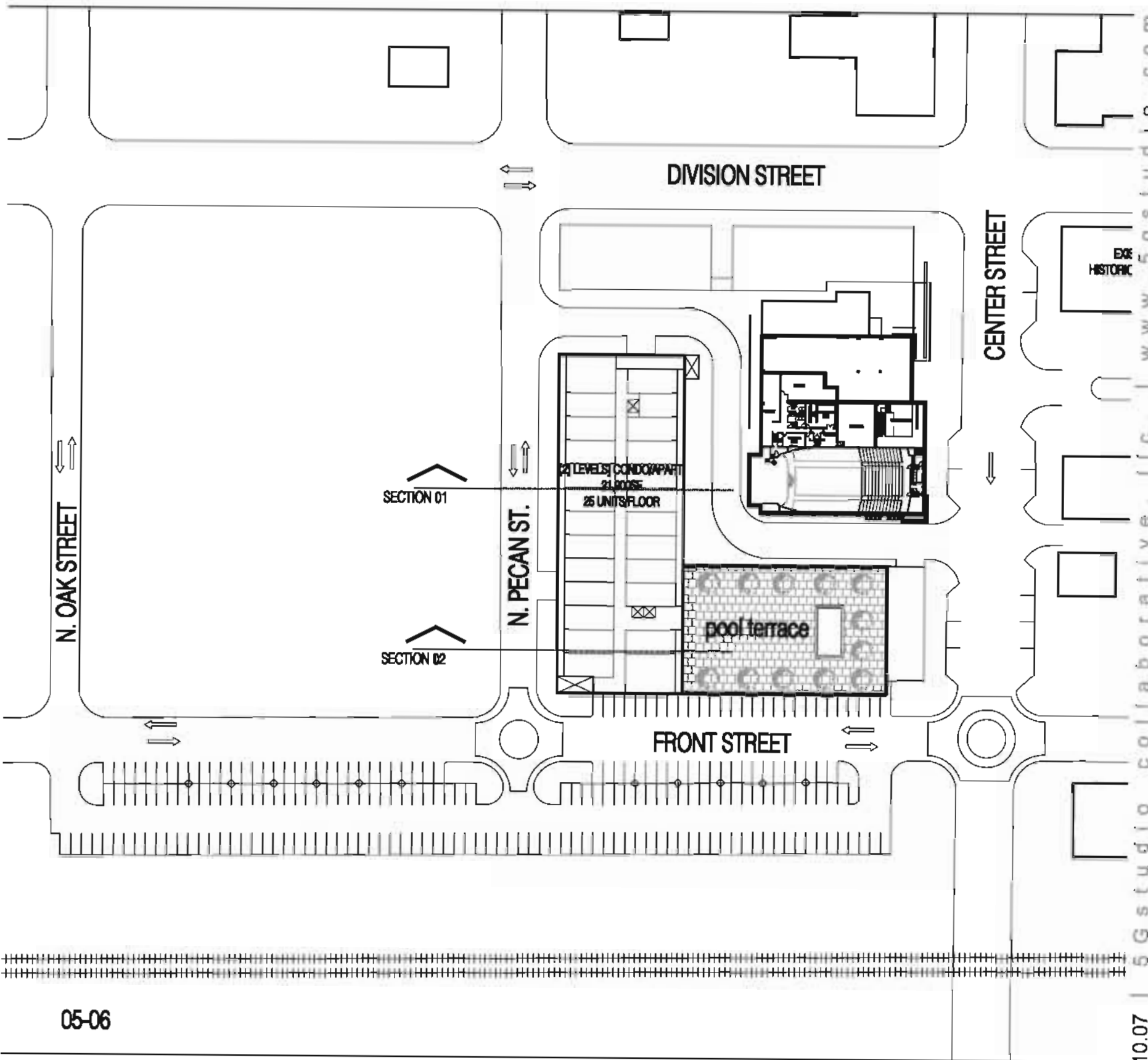
Arlington, TX

level 03-04

0

100f





05-06

Johnnie High's Revue

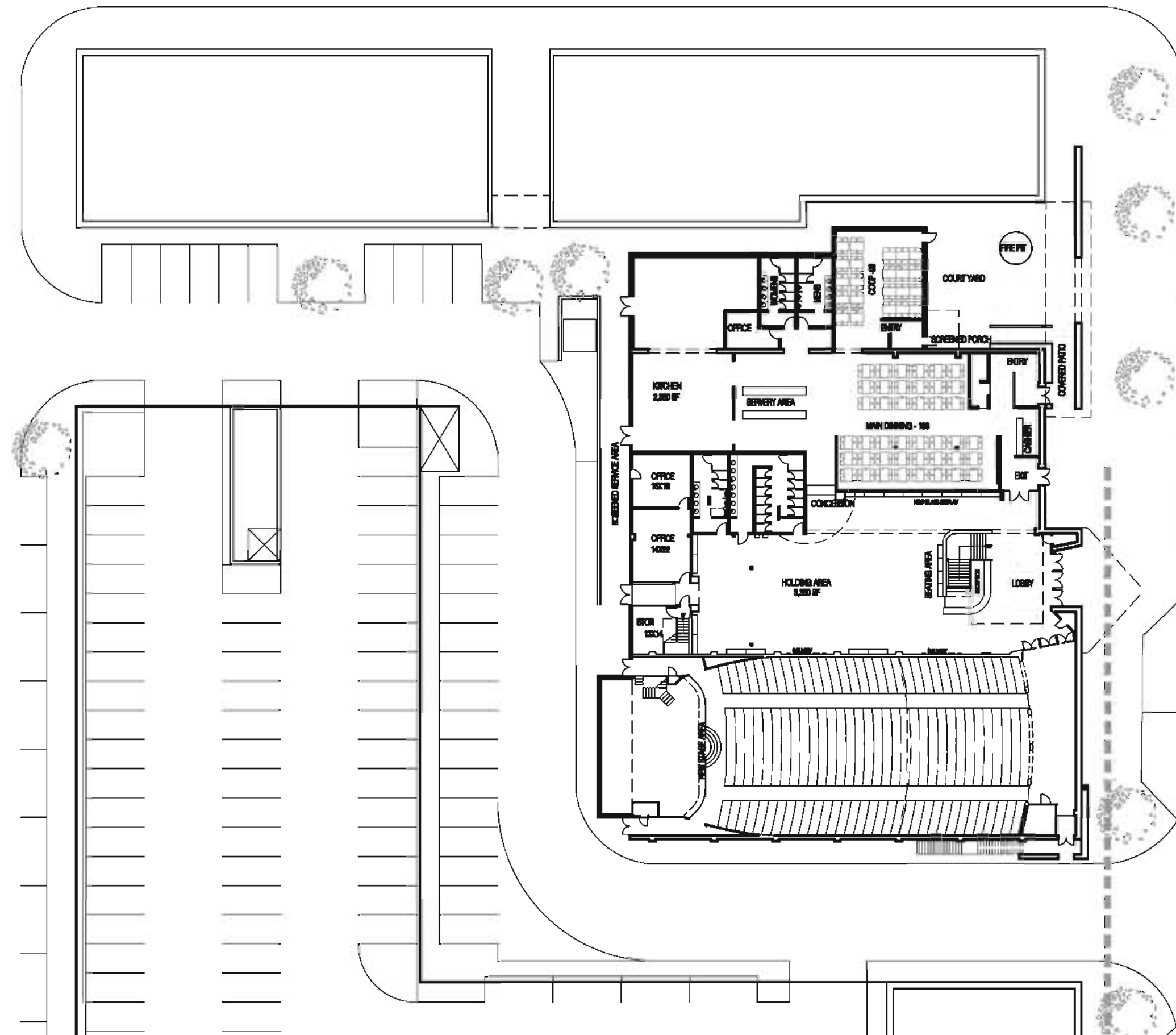
Arlington, TX

level 05-06

0

100f





CENTER STREET

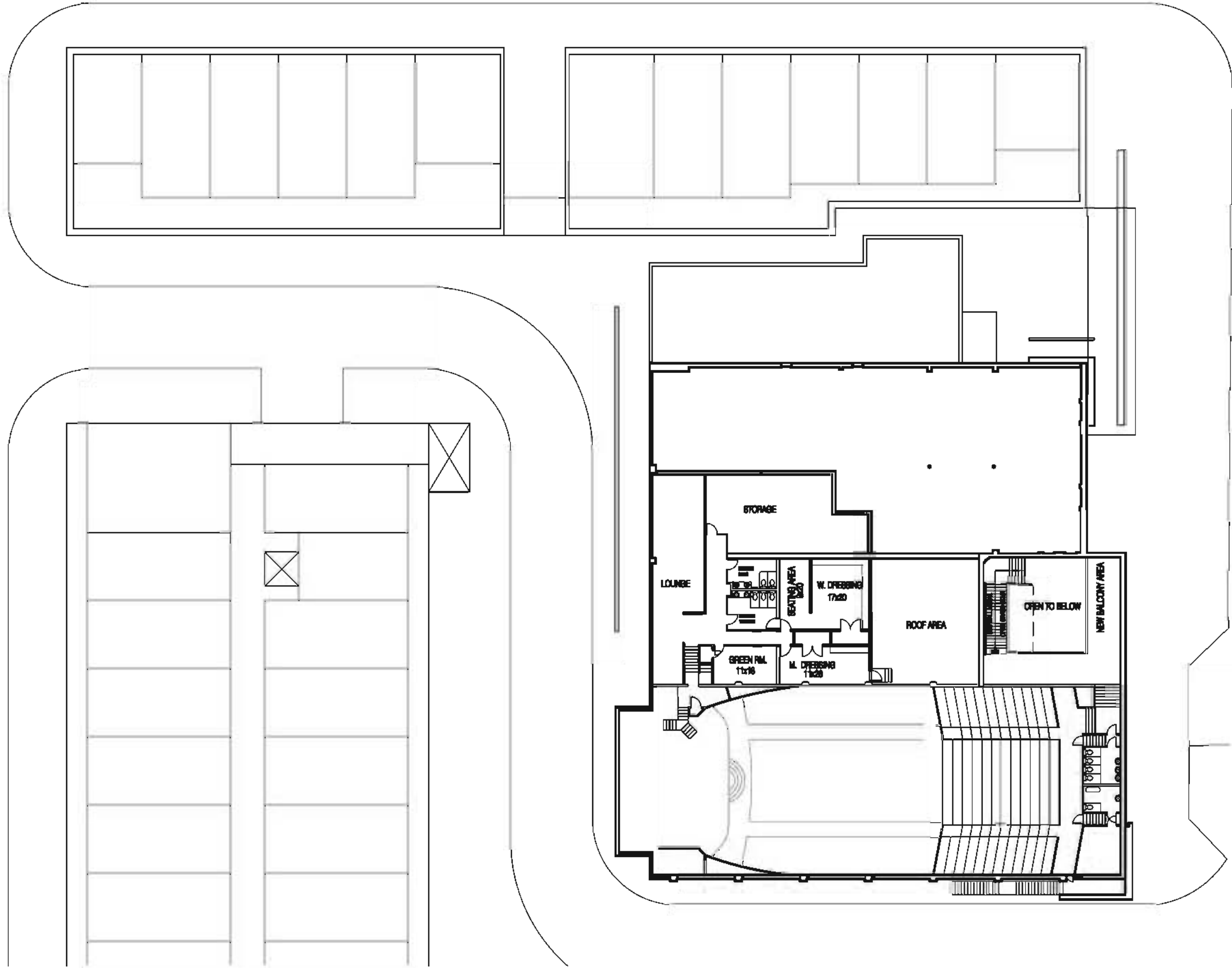
EXISTING
HISTORIC BUIL

BABE :

EXISTING = 5,000 SF
 ADDITION = 3,500 SF
 TOTAL = 8,500 SF
 256 SEATS

JOHNNIE HIGH'S :

LEVEL 01 = 8,800 SF
 LEVEL 02 = 4,600 SF
 TOTAL = 13,400 SF



Johnnie High's Revue

Arlington, TX

Johnnie high's level 02

0

30f

