

For Lease

Mountainview Mall

Ardmore, Oklahoma

Location

NWC of 12th Avenue and Commerce Street. Halfway between Dallas and Oklahoma City, right off I-35 – the ONLY mall of its size between those markets.

Size

262,619 square feet of retail

Traffic Generators

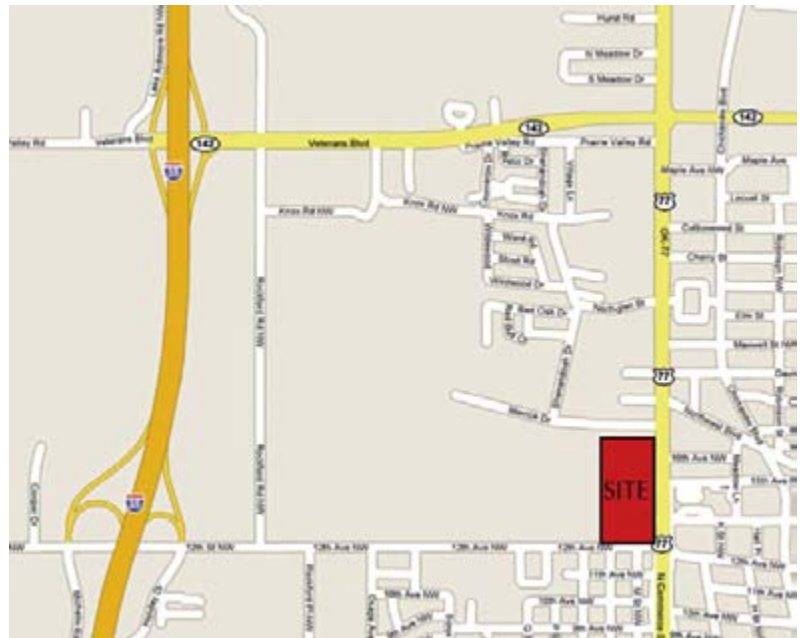
WAL-MART Supercenter

Major Regional Medical Center

Across the street from Mercy Memorial Hospital

Highlights

Major Distribution & Industrial Hub. Population growth outpacing the state. Job growth outpacing both the state and nation. Largest Oil-Producing county in Oklahoma. 124,800 trade area population. Economic center for North Texas and South Central Oklahoma. Anchored by JCPenney, Goody's, Stage, Hobby Lobby, Hibbett Sports, and Staples.



Contact

Bill Arsenault
817-268-5489
Fax 817-268-2240

or

Dwayne Collins
405-670-9588
Fax 405-670-2929

Demographics

2006 Ardmore Trade Area Population	124,800
2006 Avg. Trade Area HH Income	\$45,149

BURK COLLINS & CO., LTD.
www.burkcollinscompany.com

The information contained herein was obtained from sources believed reliable; however, the developer and realtor make no guarantees, warranties or representations as to the completeness or accuracy thereof. The presentation of this property is submitted subject to errors, omissions, change of price, or conditions, prior to sale or lease, or withdrawal without notice.

Mountainview Mall

